



# trackit™

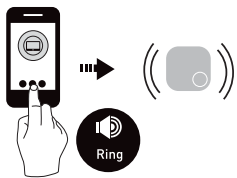
## Wireless Smart Item Tracker



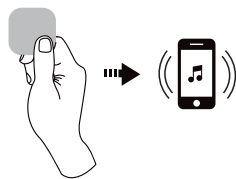
### DEVICE SET UP

- Compatible with Android 4.3 and above and Apple iOS 8.0 and above
- Download the iTrackEasy App from App Store or Google Play or scan the QR code
- Turn on Bluetooth on your phone setting screen
- Start iTrackEasy App and tap the “Sign Up” button to register. Activate your account by clicking the link sent to you by email
- Pair Trackit with your phone
  - Press “+” in the app to add a device and follow the prompt
  - Hold the Trackit device close to your phone
  - Press the button on Trackit until you hear a beep and the LED starts flashing
  - Personalise your Trackit and control up to 5 devices

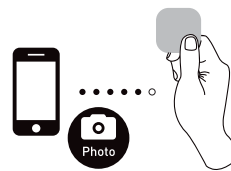
### YOU CAN NOW USE THE APP TO:



Find an item\*



Find your phone\*



Use Trackit as a remote camera switch\*



Use Map to locate your item\*\*



#### Mark as lost \*\*

The Trackit network can help you find it



#### In App Help and FAQ's

Select Help > Help Center

### ADDITIONAL FEATURES

- Turn on/off the disconnection alert
- Set to sleep mode or turn off Trackit to save battery life Detailed instructions can be found at [www.brilliantlighting.com.au/support/trackit](http://www.brilliantlighting.com.au/support/trackit)

### CHANGE BATTERY

- Remove screw and open Trackit from notch on the side with attached plastic piece
- Replace battery with CR2032 3V (“+” facing up)
- Put cover and screw back, press the button on your Trackit to reconnect the device
- Please dispose of used battery responsibly

### WORKING RANGE

Ensure Bluetooth is turned on when operating the app.

The working range varies depending on the environment.

A typical bluetooth working range is 15m+ between your phone and the device.

### WARNING:

Failure to follow these instructions may result in breakages and will invalidate warranty.

Do not perform modification or change parts within the fixture.

Trackit is not waterproof.

This device is not a toy. Keep coin sized battery and device out of sight and out of reach of children.

### WARRANTY STATEMENT

Our goods come with guarantees that cannot be excluded under the Australian Consumer Law. You are entitled to a replacement or refund for a major failure and compensation for any other reasonably foreseeable loss or damage. You are also entitled to have the goods repaired or replaced if goods fail to be of acceptable quality and the failure does not amount to a major failure.

(\*) denotes the features performed within working range

(\*\*) when the device is out of range

